

2018/05

Furniture materials

Melamine A colour group

02.15 venge 10/18/25/38	02.20 oak ferrara 10/18/25/38	02.21 graphite 10/18/25	02.22 stone grey 10/18/25	02.23 grey 10/18/25	02.25 white 10/18/25/38	02.48 walnut matte 10/18/25	02.52 sand beige 10/18/25	02.88 natural corbridge oak 10/18/25	02.90 mandal maple 10/18/25
-------------------------------	-------------------------------------	-------------------------------	---------------------------------	---------------------------	-------------------------------	-----------------------------------	---------------------------------	---	-----------------------------------

Melamine B colour group

02.19 acacia 10/18/25	02.24 cubanit grey 18/25/38	02.26 maple 10/18/25	02.29 onyx grey 18/25	02.30 light grey concrete 10/18/25	02.34 titan 10/18/25	02.40 stainless steel 10/18/25	02.41 linen beige 18/25	02.42 pigeon grey 18	02.43 cashmere 10/18/25
02.44 truffle 10/18/25	02.45 saffron 18	02.46 camel 18	02.47 wasabi 18	02.49 premium white 10/18/25/38	02.51 alabaster 10/18/25	02.60 pine creme 10/18/25/38	02.64 oak nabucco 10/18/25	02.73 black thermo oak 10/18/25	02.80 light blue 18
02.81 dark rose 18	02.87 black havana pine 10/18/25/38	02.89 natural hickory 10/18/25/38							

Melamine C colour group

02.17 larch premium white 10/18/25/38	02.18 larch black 10/18/25	02.32 ferro bronze 10/18/25	02.33 elm tossini 10/18/25	02.38 brown charlstone oak 10/18/25/38	02.54 matrix grey oak 18	02.55 oak tranche 18	02.62 gladstone oak 10/18/25	02.65 sephia gladstone oak 10/18/25	02.71 matrix dark oak 18
---	----------------------------------	-----------------------------------	----------------------------------	---	--------------------------------	----------------------------	------------------------------------	--	--------------------------------

Melamine D colour group

02.50 ares stone 18	02.56 grey shiny 18	02.67 capuchino shiny 18	02.68 beige shiny 18	02.69 white shiny 18	02.70 penelope bronze 18
---------------------------	---------------------------	--------------------------------	----------------------------	----------------------------	--------------------------------

HDF A colour group

02.23 grey 3	02.25 white 3	02.96 sand grey 3	02.97 Congo 3	02.98 graphite grey 3
--------------------	---------------------	-------------------------	---------------------	-----------------------------

- 18 the thickness of the material
- material with grain direction
- one side material

CONTACTS

+46 72 331 4157
Matison Enterprise AB
Hammarby Sjöstad
Ljusslingan 4,
120 31 Stockholm

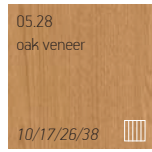
INFOMATION

info@matison.se
www.matison.se

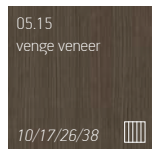
2018/08

Furniture materials

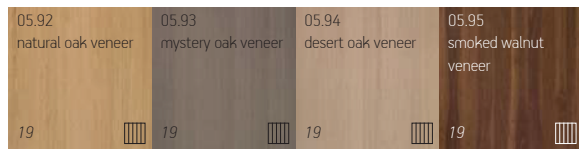
Veneer Eco colour group



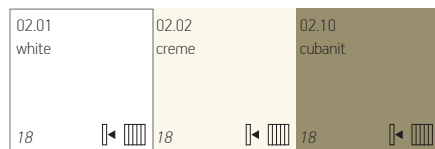
Veneer Lux colour group



Finierējumi G krāsu grupa Veneer G colour group





Acrylic E colour group



Acrylic F colour group



- 18 the thickness of the material
-  material with grain direction
-  one side material

CONTACTS

+46 72 331 4157
 Matison Enterprise AB
 Hammarby Sjöstad
 Ljusslingan 4,
 120 31 Stockholm

INFOMATION

info@matison.se
 www.matison.se

