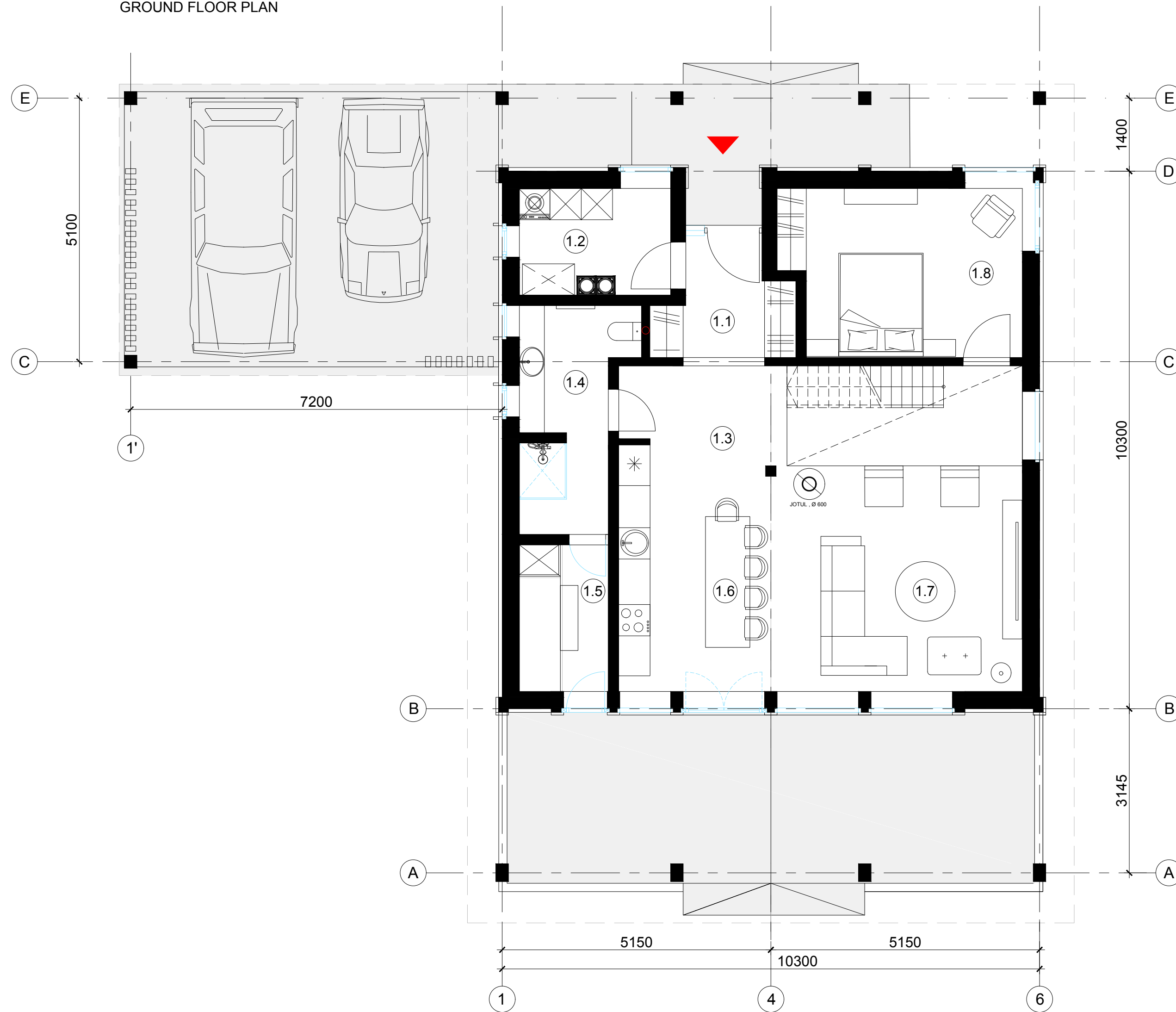


GROUND FLOOR PLAN

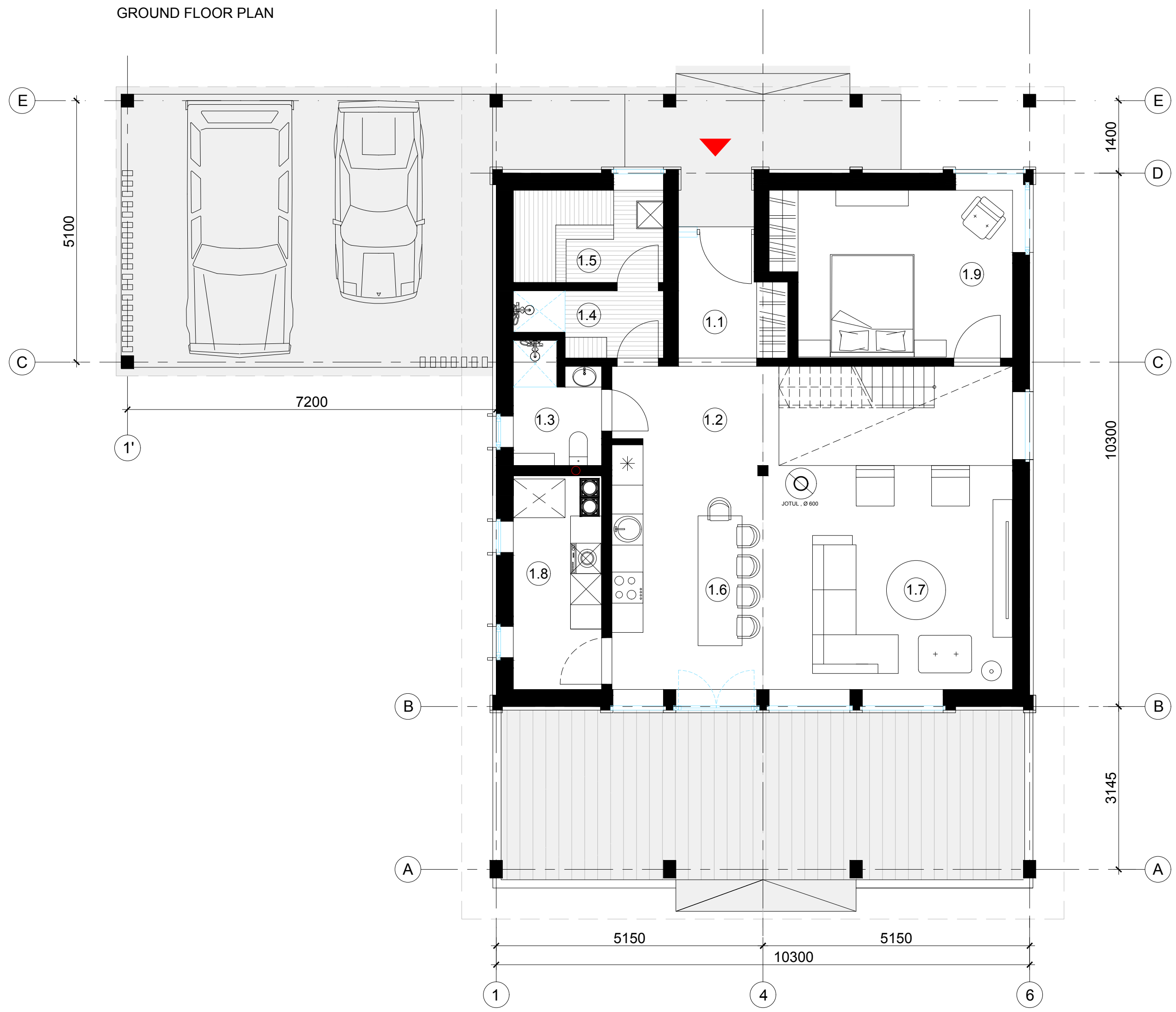


1.1	ENTRANCE	5.1
1.2	TECHNICAL ROOM	6.0
1.3	HALL	6.6
1.4	WC-BATHROOM	7.8
1.5	SAUNA	4.7
1.6	KITCHEN - DINING AREA	16.3
1.7	LIVING ROOM	25.0
1.8	BEDROOM	14.2
	OUTDOOR CAR PORT	32.0
	TERRACES	45.0

GROUND FLOOR LIVING AREA TOTAL: 85.7 m<sup>2</sup>



GROUND FLOOR PLAN

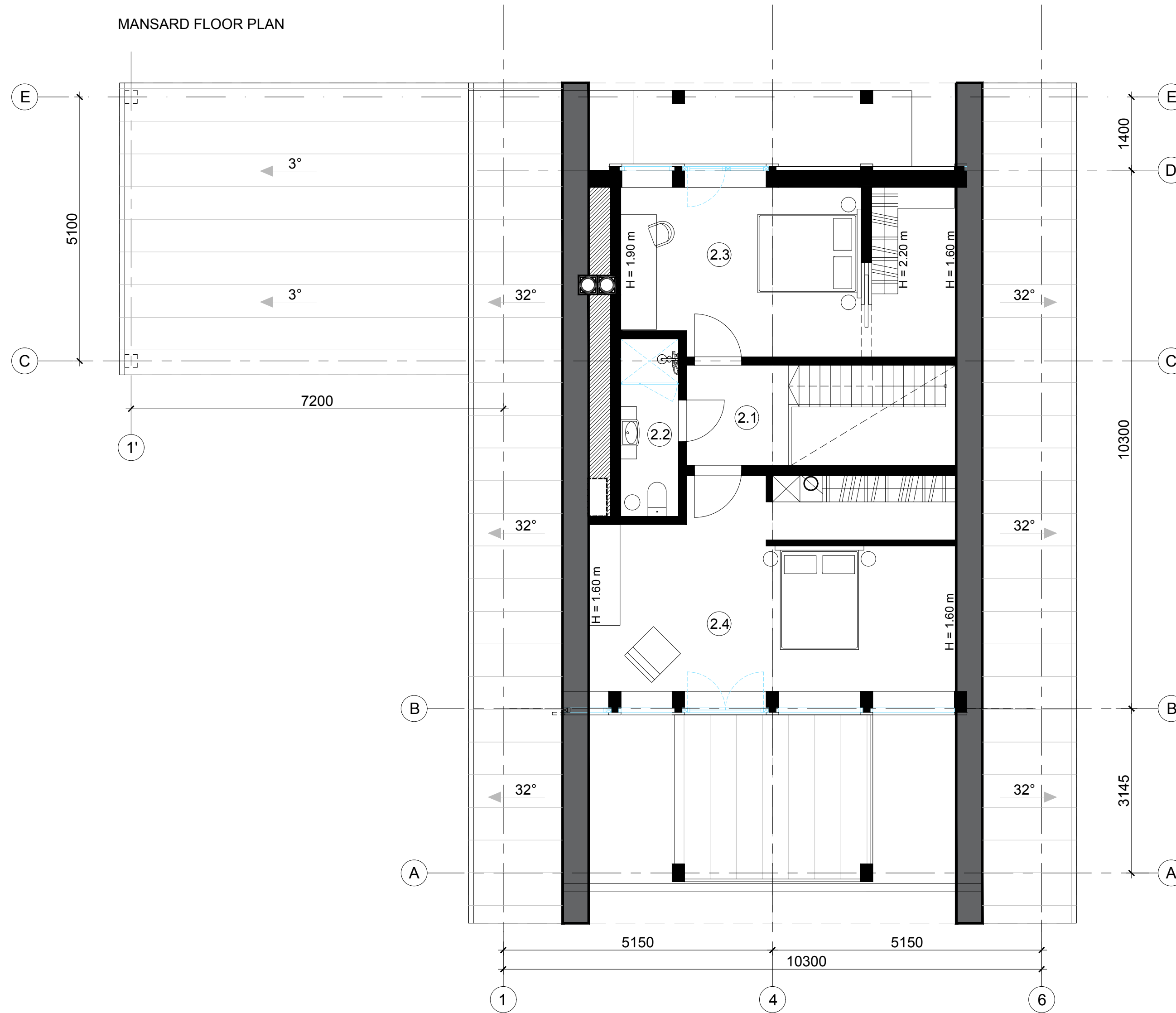


1.1	ENTRANCE	5.1
1.2	HALL	6.6
1.3	WC-BATHROOM	3.6
1.4	CHANGING ROOM WITH SHOWER	3.2
1.5	SAUNA	5.1
1.6	KITCHEN - DINING AREA	16.3
1.7	LIVING ROOM	25.0
1.8	TECHNICAL ROOM	7.0
1.9	BEDROOM	14.2
	OUTDOOR CAR PORT	32.0
	TERRACES	45.0

GROUND FLOOR LIVING AREA TOTAL: 85.7 m<sup>2</sup>



MANSARD FLOOR PLAN



2.1	HALL	3.6
2.2	BATHROOM	3.2
2.3	BEDROOM WITH WARDROBE	17.5
2.4	BEDROOM WITH WARDROBE	21.5
	OUTDOOR BALCONY	12.0

2nd. FLOOR LIVING AREA TOTAL: 45.8 m<sup>2</sup>

LIVING AREA PER HOUSE TOTAL : 131.5 m<sup>2</sup>